

Biodiversity Mapping at University of Helsinki Campuses

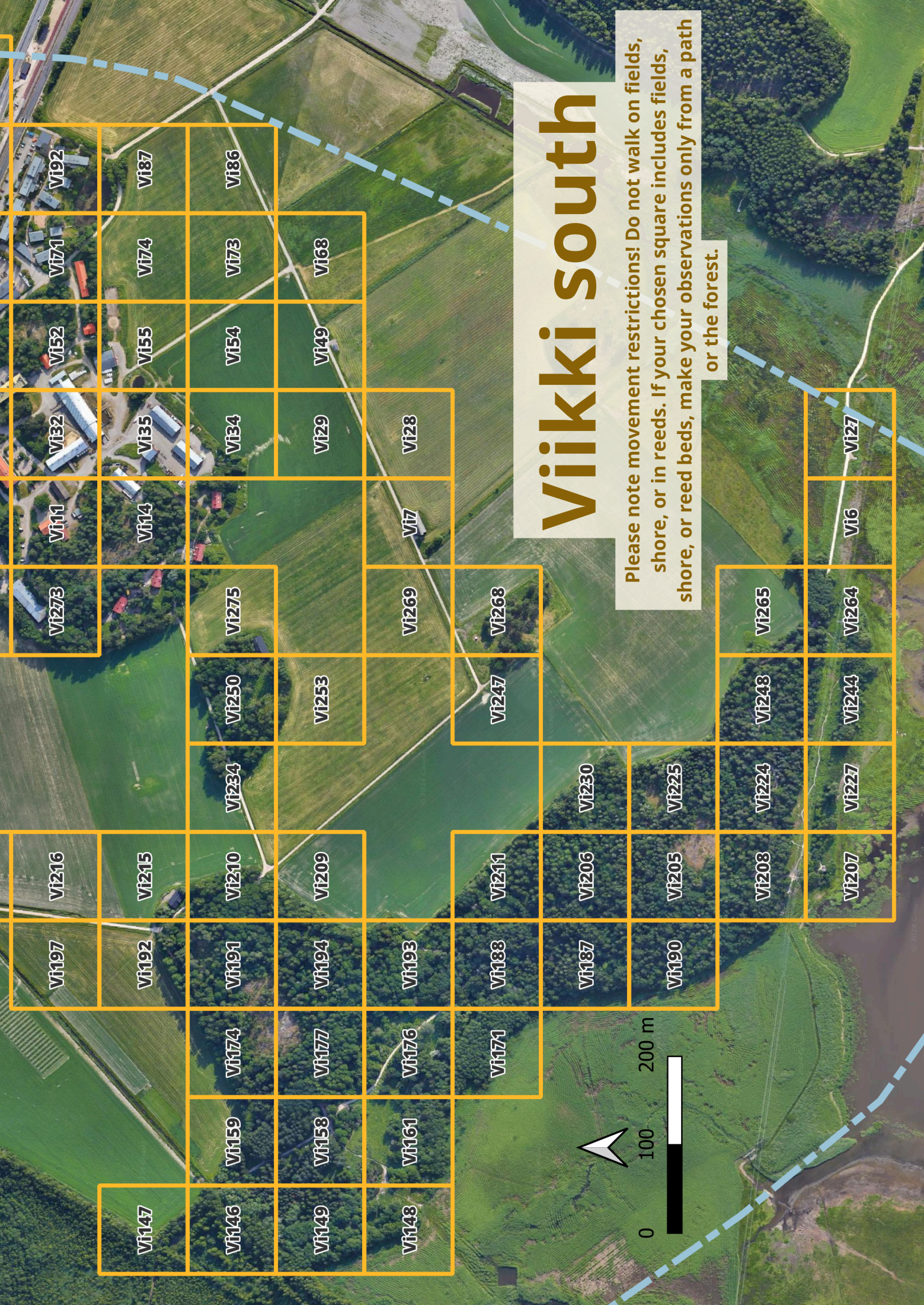
The University of Helsinki is starting to assess biodiversity values on its campuses: City Centre, Kumpula, Meilahti, and Viikki. Surveys will be conducted in four different species groups: birds, flowering plants, butterflies, and bumblebees, within hectare squares. Anyone knowledgeable about species can participate in the surveys.

How to Participate? Quick Guide:

- **Survey Grids:** The survey is conducted in hectare (100 m x 100 m) grids. You can freely choose which grid to survey, but please be aware of possible movement restrictions: for example, walking on fields, Viikki shore areas, or private properties is prohibited. If your chosen grid includes such areas, surveys should only be conducted in the permitted parts of the grid.
- **Using the App:** Surveys are conducted using the 'Mobiilivihko'/'Nature notebok' app from the Finnish Biodiversity Information Facility, available for both Android and iPhone. Download the app before conducting your survey.
- **Complete Lists in Nature Notebook:** In the app, there are 'complete lists' for each species group: '*Bird Atlas*' (birds), '*Butterflies*', '*Large flowers*' (plants), and '*Bumblebees*'. Choose the species group you want to survey. The best time for surveys is from May to July (birds in the mornings during May and June). Observe insects during the day, preferably in sunny weather.
- **Recording Observations:** The app will provide a species list for your chosen group, from which you will select the species you observe. For birds, bumblebees, and butterflies, you can also report numbers. For plants, select the life stage: 'sprout', 'flower', or 'seed/fruit'. The app records the start time and the route taken, which will be visible on the map.
- **Conducting the Survey:** Go to your chosen grid and activate the app, opening the desired species list. The app will automatically record the start time. Try to stay within the grid and spend at least 15 minutes surveying. The recommended time is 30 minutes. One grid can be surveyed, for example, during a lunch break. 😊
- **Selecting Species:** Select all the species from the list that you observed within the grid. If you observe other species outside the grid (e.g., a singing bird or a flying butterfly), you can mark their location on the map by pressing the species' location. This will bring up a menu where you can add the species observation. The advantage of complete lists is that they also collect information on species not observed from the list, known as zero observations.
- **Finishing the Survey:** When you are done, press the Stop button. The system will automatically record the end time.
- **Submitting the List:** Ensure the completeness of the species list is marked (option B), and add additional information such as the grid code, which can be found on the map. Send the list either as a draft or, if you are ready, directly as public.
- **Surveys Elsewhere in Finland:** Complete lists can be filled out for different species groups elsewhere in Finland. More information on filling out lists can be found here: <https://www.helsinki.fi/fi/luomus/havainnot-ja-seurannat/kasvi-elain-ja-sienilajien-seuranta-taydelliset-listat> (in Finnish)

Viikki south

Please note movement restrictions! Do not walk on fields, shore, or in reeds. If your chosen square includes fields, shore, or reed beds, make your observations only from a path or the forest.



Vi147

Vi146

Vi149

Vi148

Vi159

Vi158

Vi161

Vi174

Vi177

Vi176

Vi171

Vi197

Vi192

Vi191

Vi194

Vi193

Vi188

Vi187

Vi190

Vi216

Vi215

Vi210

Vi209

Vi211

Vi206

Vi205

Vi208

Vi207

Vi273

Vi275

Vi269

Vi268

Vi265

Vi264

Vi11

Vi14

Vi250

Vi253

Vi17

Vi247

Vi244

Vi32

Vi35

Vi34

Vi29

Vi28

Vi27

Vi52

Vi55

Vi54

Vi49

Vi6

Vi71

Vi74

Vi73

Vi68

Vi92

Vi87

Vi86

0 100 200 m

