

Biodiversity Mapping at University of Helsinki Campuses

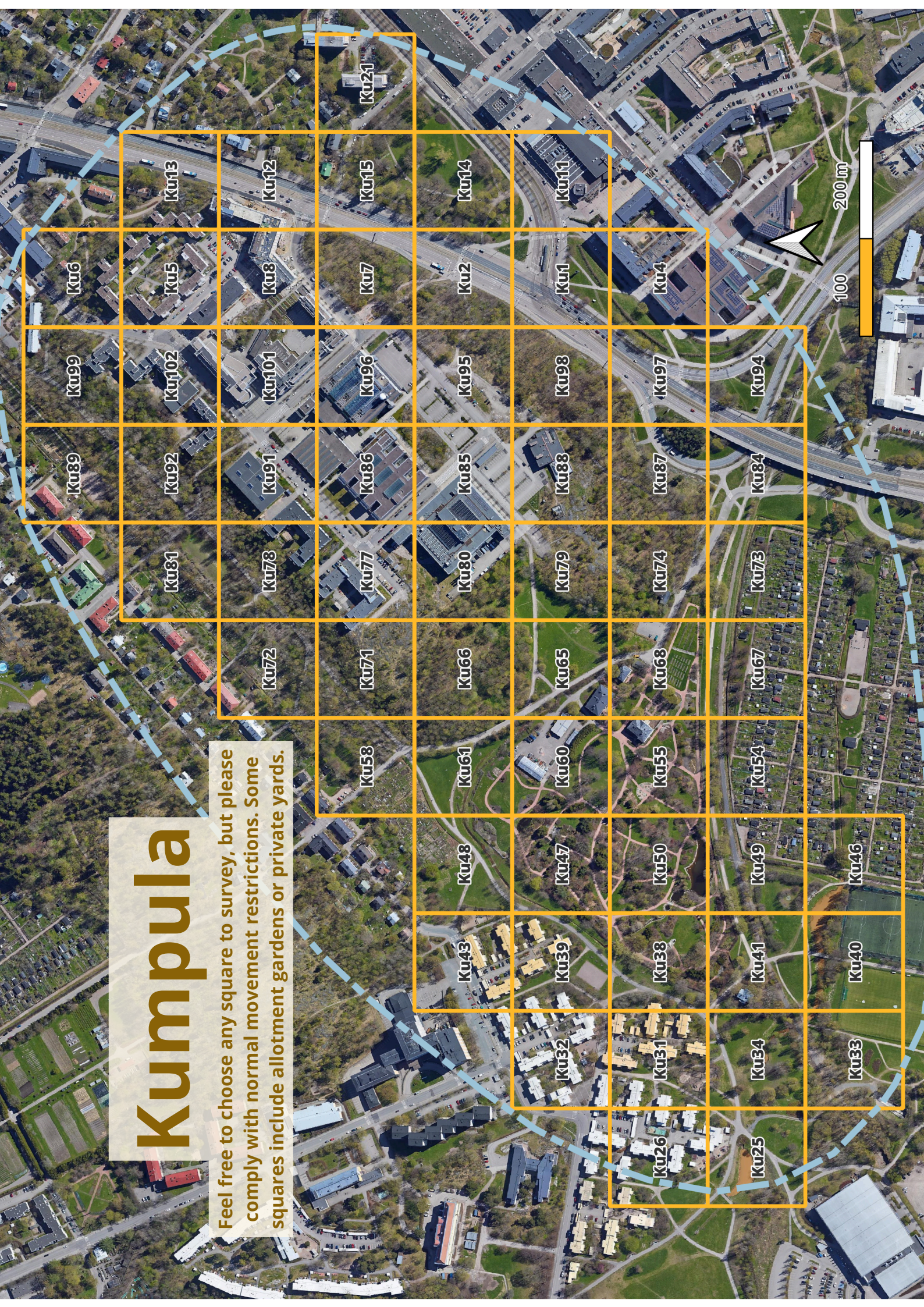
The University of Helsinki is starting to assess biodiversity values on its campuses: City Centre, Kumpula, Meilahti, and Viikki. Surveys will be conducted in four different species groups: birds, flowering plants, butterflies, and bumblebees, within hectare squares. Anyone knowledgeable about species can participate in the surveys.

How to Participate? Quick Guide:

- **Survey Grids:** The survey is conducted in hectare (100 m x 100 m) grids. You can freely choose which grid to survey, but please be aware of possible movement restrictions: for example, walking on fields, Viikki shore areas, or private properties is prohibited. If your chosen grid includes such areas, surveys should only be conducted in the permitted parts of the grid.
- **Using the App:** Surveys are conducted using the 'Mobiilivihko'/'Nature notebok' app from the Finnish Biodiversity Information Facility, available for both Android and iPhone. Download the app before conducting your survey.
- **Complete Lists in Nature Notebook:** In the app, there are 'complete lists' for each species group: '*Bird Atlas*' (birds), '*Butterflies*', '*Large flowers*' (plants), and '*Bumblebees*'. Choose the species group you want to survey. The best time for surveys is from May to July (birds in the mornings during May and June). Observe insects during the day, preferably in sunny weather.
- **Recording Observations:** The app will provide a species list for your chosen group, from which you will select the species you observe. For birds, bumblebees, and butterflies, you can also report numbers. For plants, select the life stage: 'sprout', 'flower', or 'seed/fruit'. The app records the start time and the route taken, which will be visible on the map.
- **Conducting the Survey:** Go to your chosen grid and activate the app, opening the desired species list. The app will automatically record the start time. Try to stay within the grid and spend at least 15 minutes surveying. The recommended time is 30 minutes. One grid can be surveyed, for example, during a lunch break. 😊
- **Selecting Species:** Select all the species from the list that you observed within the grid. If you observe other species outside the grid (e.g., a singing bird or a flying butterfly), you can mark their location on the map by pressing the species' location. This will bring up a menu where you can add the species observation. The advantage of complete lists is that they also collect information on species not observed from the list, known as zero observations.
- **Finishing the Survey:** When you are done, press the Stop button. The system will automatically record the end time.
- **Submitting the List:** Ensure the completeness of the species list is marked (option B), and add additional information such as the grid code, which can be found on the map. Send the list either as a draft or, if you are ready, directly as public.
- **Surveys Elsewhere in Finland:** Complete lists can be filled out for different species groups elsewhere in Finland. More information on filling out lists can be found here: <https://www.helsinki.fi/fi/luomus/havainnot-ja-seurannat/kasvi-elain-ja-sienilajien-seuranta-taydelliset-listat> (in Finnish)

Kumpula

Feel free to choose any square to survey, but please comply with normal movement restrictions. Some squares include allotment gardens or private yards.



Ku6

Ku13

Ku12

Ku15

Ku14

Ku11

Ku21

Ku89

Ku99

Ku102

Ku101

Ku96

Ku95

Ku98

Ku4

Ku89

Ku92

Ku91

Ku86

Ku85

Ku88

Ku97

Ku94

Ku81

Ku78

Ku77

Ku80

Ku79

Ku74

Ku73

Ku72

Ku71

Ku66

Ku65

Ku68

Ku67

Ku58

Ku61

Ku60

Ku55

Ku54

Ku48

Ku47

Ku50

Ku49

Ku46

Ku43

Ku39

Ku38

Ku41

Ku40

Ku32

Ku31

Ku34

Ku33

Ku26

Ku25

200 m

100